

2016-5718  
2017-05-25

**Sasco Products Limited**  
**IMPEL<sup>®</sup> (BORON) RODS**  
**Wood Preservative**

**Protection of Wood against Fungal Decay and Insects**

**COMMERCIAL**  
READ THE LABEL BEFORE USING  
**KEEP OUT OF REACH OF CHILDREN**  
**HARMFUL OR FATAL IF SWALLOWED**

GUARANTEE:  
ANHYDROUS DISODIUM OCTABORATE  
(Na<sub>2</sub>B<sub>8</sub>O<sub>13</sub>)..... 98%



POISON

CAUTION

ROD SIZE: ..... WEIGHT/ROD: ..... NUMBER/PKG: .....  
NET CONTENTS: .....KG  
NUMBER PLASTIC OR WOOD PLUGS/PKG: .....

**REGISTRATION NO.** 21324 PEST CONTROL PRODUCTS ACT

**Registrant:**  
Kai R. Spangenberg EFTF I/S  
Mandal Alle 9A  
DK 5500 Middelfart  
Denmark

**Canadian Importer and Agent:**  
Sasco Products Ltd.  
10 Ilsley Avenue, Unit 3  
Dartmouth, Nova Scotia  
Canada B3B 1L3

### **DIRECTIONS FOR USE:**

IMPEL (BORON) RODS are recommended for pre-treatment and remedial protection of non-food contact wood and wood products against decay and insects.

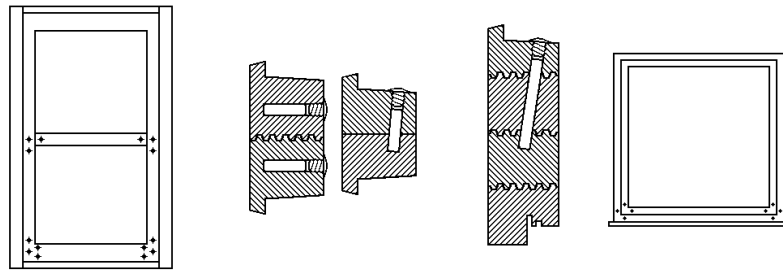
IMPEL is not effective against termites.

The IMPEL (BORON) ROD is to be used in lumber with a permanent or periodical moisture content above the fibre saturation point (30%), e.g. window frames, bottom sill members or logs.

The IMPEL (BORON) ROD is inserted in a drilled hole, 9.5-20mm. The hole is covered by a cap (plug). Never hammer the IMPEL (BORON) ROD during installation. By using a plastic cap, it is possible to carry out inspections, e.g. in conjunction with the maintenance of the surface treatment. If the IMPEL (BORON) ROD has dissolved, the timber has been subjected to a moisture content above the fibre saturation point, and a new IMPEL (BORON) ROD can be inserted in the hole.

When the wood is dry, painting, or any other type of surface coating may be applied if desired. The remedial treatment is carried out at positions particularly susceptible to decay, e.g. end grain, joints etc. In placing of the IMPEL (BORON) RODS use caution not to cause structural damage to window or casement etc.

The distance between the IMPEL (BORON) RODS should be 20 - 25cm in the zone to be protected.



### **PRECAUTIONS**

May be harmful or fatal if swallowed. **KEEP OUT OF REACH OF CHILDREN.** Store in a dry location and out of contact with food and feed.

Wash hands thoroughly after handling this product and before eating or smoking.

Apply/use only in areas inaccessible to children and pets. Wear long pants, long sleeved shirt, chemical-resistant coveralls, and chemical-resistant gloves when applying boron.

### **FIRST AID**

If in eyes: Flush with plenty of water, contact a physician or a poison control centre.

If on skin: Wash with plenty of soap and water.

If swallowed: Call a physician or poison control centre. Drink 1 or 2 glasses of water and induce vomiting by touching the back of the throat with finger.

Take container, label or product name and Pest Control Product Registration Number with you when seeking medical attention.

### **TOXICOLOGICAL INFORMATION**

Contains Anhydrous Disodium Octaborate. Treat symptomatically.

### **DISPOSAL**

1. Triple- or pressure-rinse the empty container. Add the rinsings to the spray mixture in the tank.
2. Follow provincial instruction for any required additional cleaning of the container prior to its disposal.

2016-5718  
2017-05-25

3. Make the empty container unsuitable for further use.
4. Dispose of the container in accordance with provincial requirements.
5. For information on disposal of unused, unwanted product, contact the manufacturer or the provincial regulatory agency. Contact the manufacturer and the provincial regulatory agency in case of a spill, and for clean-up of spills

**NOTICE TO USER:** This pest control product is to be used only in accordance with the directions on the label. It is an offence under the Pest Control Products Act to use this product in a way that is inconsistent with the directions on the label. The user assumes the risk to persons or property that arises from any such use of this product.

September 2016